

CAUTION

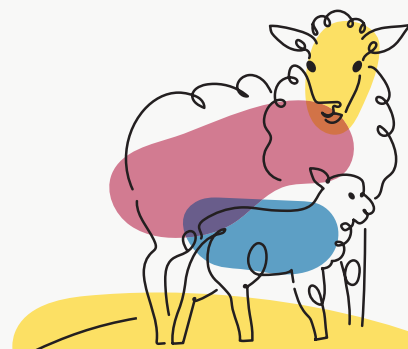
KEEP OUT OF REACH OF CHILDREN
FOR ANIMAL TREATMENT ONLY
READ SAFETY DIRECTIONS BEFORE
OPENING OR USING

SIDEWINDER

Long Acting Injection For Sheep

ACTIVE CONSTITUENT: 20 g/L MOXIDECTIN

For treatment and control of roundworms, nasal bot and itchmite in sheep and for protection against severe challenge by *Haemonchus contortus* (barber's pole worm) for up to 4 months.



FOUR SEASONS
AGRIBUSINESS

For treatment and control of roundworms, nasal bot and itchmite in sheep and for protection against severe challenge by *Haemonchus contortus* (barber's pole worm) for up to 4 months.

- Long acting control of barber's pole worm, *Teladorsagia (Ostertagia) circumcincta* for not less than 91 days, and *Trichostrongylus colubriformis* for up to 49 days.
- Long acting protection against severe challenge by barber's pole worm for up to 4 months.
- Nasal bot control.
- Itchmite control.

SIDEWINDER LONG ACTING INJECTION FOR SHEEP contains moxidectin, a second generation of the macrocyclic lactone family. It is effective against sensitive strains of the following parasites and provides protection against severe challenge by *Haemonchus contortus* (barber's pole worm) for up to 4 months:

Internal Parasites

Mature (adult) and immature (L4)

Haemonchus contortus (barber's pole worm)

Trichostrongylus spp. (black scour worm)

Trichostrongylus axei (stomach hair worm)

Trichostrongylus colubriformis

Teladorsagia (Ostertagia) spp. (small brown stomach worm)

Teladorsagia (Ostertagia) circumcincta

Ostertagia lyrata

Cooperia spp. (small intestinal worm)

Cooperia oncophora

Nematodirus spp. (thin necked intestinal worm)

Nematodirus battus

Nematodirus filicollis

Nematodirus spathiger

Strongyloides papillosus (intestinal threadworm)

Oesophagostomum columbianum (nodule worm)

Chabertia ovina (large mouthed bowel worm)

Dictyocaulus filaria (large lungworm)

Adult nematodes

Trichostrongylus rugatus

Trichostrongylus vitrinus

Ostertagia trifurcata

Cooperia curticei

Nematodirus abnormalis

Nematodirus helvetianus

Oesophagostomum venulosum (large bowel worm)

Trichuris avis

External parasites

Psorergates avis (itch mite)

Oestrus avis (nasal bot)

RESISTANCE AND WORM CONTROL PROGRAMS

It is advisable that a drench resistance test be conducted before any anthelmintic treatment is used.

Resistance may develop to any anthelmintic treatment.

Ask your local veterinary practitioner or animal health advisor for recommended parasite management practices for your area.

Directions For Use:

Restraints:

DO NOT USE in ewes which are producing or may in the future produce milk that may be used or processed for human consumption.

RETREATMENT INTERVAL: Must not be retreated for at least 91 days after administration.

Contraindications:

SIDEWINDER LONG ACTING INJECTION FOR SHEEP is not recommended for use in goats as safety and efficacy have not been evaluated.

Dosage and Administration:

Use the contents within 6 months of first broaching of the vial. Discard the unused portion.

DOSE RATE: 1 mg moxidectin/kg liveweight (1 mL / 20 kg liveweight).

Sidewinder Long Acting Injection for Sheep must be administered by subcutaneous (under the skin) injection at the base of the ear or high on the neck behind the ear.

The product is ready to use. Administer the dose according to the Dosage Table using the injector gun. Check dose rates and equipment before treatment commences. Sheep should be weighed prior to dosing and treated according to the weight range bracket in the dosage table below. Do not underdose.

DOSAGE TABLE:

Weight Range (KG)	Dose Volume (mL)
20*	1
21 - 30	1.5
31 - 40	2
41 - 50	2.5
51 - 60	3
61 - 70	3.5
71 - 80	4
81 - 90*	4.5

* DO NOT USE IN LAMBS LESS THAN 20 KG.

* Animal heavier than 90 kg to be dosed at 0.5 mL per 10 kg.

NOT TO BE USED FOR ANY PURPOSE, OR IN ANY MANNER, CONTRARY TO THIS LABEL UNLESS AUTHORISED UNDER APPROPRIATE LEGISLATION.

General Directions:

PROTECTION PERIOD: When SIDEWINDER LONG ACTING INJECTION FOR SHEEP is used at the recommended dose rate as a single subcutaneous injection, it prevents reinfection of the sheep with nematodes as in the following table:

Protection	<i>H. contortus</i>	<i>T. (O.) circumcincta</i>	<i>T. colubriformis</i>
Prevents reinfection of sheep with worms	Not less than 91 days	Not less than 91 days	Up to 49 days

SIDEWINDER LONG ACTING INJECTION FOR SHEEP has been shown to protect sheep against severe challenge by *H. contortus* for up to 4 months.

SIDEWINDER LONG ACTING INJECTION FOR SHEEP is effective against benzimidazole and levamisole resistant strains of *H. contortus*, *T. colubriformis* and *T. (O.) circumcincta*. SIDEWINDER has shown efficacy against a number of avermectin resistant strains of *H. contortus* and *Teladorsagia (Ostertagia)* spp. However, as SIDEWINDER shares a similar mechanism of action to the avermectins, it SHOULD NOT be used where avermectin resistance is present, except where specifically recommended by an advisor.

SIDEWINDER LONG ACTING INJECTION FOR SHEEP has a wide margin of safety when used as recommended. SIDEWINDER LONG ACTING INJECTION FOR SHEEP is safe to use concurrently with other treatments including mineral supplements and vaccines. It is recommended that vaccines are injected on the opposite side of the neck to SIDEWINDER LONG ACTING INJECTION FOR SHEEP.

Caution: avoid carcass damage

- Rinse all injection syringes, ensure needles and draw off tubes are free of dirt and unused product before and after use;
- Sanitise plastic injection apparatus by immersing in 500 mL of water plus 20 mL of household bleach (4% w/v available chlorine) for 1 hour. Flush with cool boiled water before use;
- Maintain cleanliness at all times;
- Keep needles sharp and clean, replace frequently;
- Avoid injection of animals during wet weather or under dusty conditions as far as possible;
- Inject the product under the skin, NOT into the muscle tissue;
- Inject at the base of the ear or high on the neck behind the ear.

WITHHOLDING PERIODS

MEAT: DO NOT USE less than 91 days before slaughter for human consumption.

MILK: DO NOT USE in ewes which are producing or may in the future produce milk that may be used or processed for human consumption.

TRADE ADVICE: EXPORT SLAUGHTER INTERVAL (ESI): DO NOT USE less than 133 days before slaughter for export. The ESI on this label was correct at the time of label approval. Before using this product, confirm the current ESI from Four Seasons Agribusiness Pty Ltd 1300 449 255 or the APVMA website (<http://www.apvma.gov.au/residues/>).

SAFETY DIRECTIONS: Poisonous if swallowed. May irritate the nose and throat. Will irritate eyes and skin. Avoid contact with eyes and skin. Do not inhale. Wash hands after use.

FIRST AID: If poisoning occurs, contact a doctor or Poisons Information Centre. Phone Australia 131126.

ADDITIONAL USER SAFETY: Avoid self-injection. If self-injection occurs, seek medical advice as soon as possible.

Warning: Accidental self-injection may cause a persistent inflammatory or an allergic response. Medical advice should be sought as soon as possible on the management of all instances of self-injection, especially deep injections, those near a joint or those associated with bruising.

The application of gentle pressure with absorbent material, e.g. facial tissues, to the needle puncture area will swab up unabsorbed product. Strong squeezing of the site should be avoided. The damaged area should be thoroughly cleansed and a suitable antiseptic applied.

ENVIRONMENTAL PROTECTION: Extremely toxic to aquatic species. Do not contaminate dams, rivers, streams or other waterways with the chemical or used container.

DISPOSAL: Dispose of empty vials by wrapping with paper and placing in the garbage.

STORAGE: Store at or below 30°C (Room temperature). Protect from light.

SAFETY DATA SHEET: Additional information is listed in the Safety Data Sheet (SDS) which is available from the supplier.

CONDITIONS OF SALE: The sale, supply, storage, use and application of this product is beyond the control of the manufacturer, and, subject to this provision, all warranties, conditions, rights and remedies express or implied under common law, statute or otherwise, in relation to the sale, supply, storage, use or application are excluded. Four Seasons Agribusiness Pty Limited and its associated entities shall not accept any liability whatsoever (including consequential loss) or however arising (including negligence) for any damage, injury or death connected with the sale, supply, storage, use or application of this product except for liability which cannot be excluded by statute.

APVMA Approval No: 89250/126176

**IN AN EMERGENCY
DIAL 000
POLICE OR FIRE BRIGADE**